

try My BesT, to be the best!

**MIBET
ENERGY**

ADD: No. 53, Baihuyan Rd., Jimei District, Xiamen China
TEL: 86-592-6771595
FAX: 86-592-6771575
E-mail: sales@mbt-energy.com



MRac Product Catalogue

www.mbt-energy.com





try My BesT, to be the best!



MRac Ground Terrace III is a further developed solution on the basis of GT II. After renovation, the GT III solution is capable of extreme snow and wind load capacities. The efficient structural design minimizes material usage while ensures a quick and easy installation, the patented technology and high degree of pre-assembled components help to reduce material and labor cost onsite, and to make it more economical for installation of any other PV projects.

Technical Parameters

Installation Site:	Open terrain – ground mount
Foundation:	Concrete bases, Ground screws
Installation Angle:	5-60°
Wind Load:	80m/s
Snow Load:	1.6KN/m²
PV Modules:	Framed, unframed
Module Orientation:	Portrait and landscape
Ground Clearance:	500-2000mm
Standards:	AS/NZS 1170
	DIN 1055
	JIS C 8955: 2011
	International Building Code IBC 2009
	California Building Code CBC 2010
Profile Material:	Al6005-T5
Fasten Parts:	SUS304
Small Components:	Al6005-T5
Color:	Silvery or according to customer requirements
Warranty:	10 years

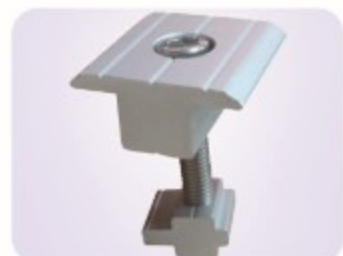


MRac Ground Terrace III



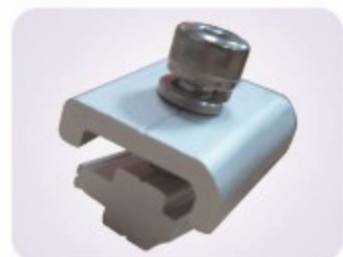
MR-EC-ST End Clamp Kit

End Clamp
Cross Module
Hexagon Socket Head Bolt
Spring Washer M8.4



MR-IC-ST Inter Clamp Kit

Inter Clamp
Cross Module
Hexagon Socket Head Bolt
Spring Washer M8.4



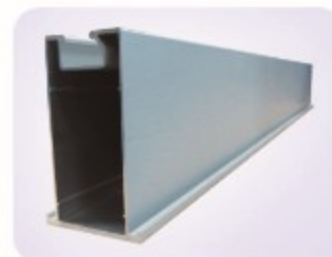
MR-CC-T C Clamp Kit

C Clamp
Cross Module
Hexagon Socket Head Bolt
Spring Washer M8.4



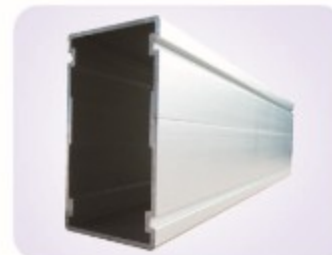
Feature: Unique designed Cross Module makes your installation time and cost effective.

PRODUCT CENTER



MR-R-105 Rail 105

With a standard length 3100mm
With a standard length 4100mm
With a standard length 5100mm



MR-SP-105 Splice for Rail 105

Splice with a standard length of 260mm
Self-tapping Screw ST6.3*22

Feature: Connector for Rail 105.



Product advantages

1. Quick assembly with minimal components, high degree of pre-assembly minimizes costly labor, eliminating the necessity of onsite cutting or drilling.
2. Flexible module layout, can be applied to both vertical and landscape solutions.
3. Suitable foundation types are optional, can be pre-made concrete basements, concrete footings, steel support bracket or combining with Ground Screws, according to your specific requirements.
4. All aluminum and stainless steel, strict QC offers more reliable solutions with a quite long life span.
5. Compact designed components increase the packaging density, allowing for more container capacity.

MIBET ENERGY



MRac Ground Terrace III



MR-GT3-AP GT3 Anchor Plate

Hexagon Bolt M12*75



Spring Washer M12.4



Flat Washer M12



Hexagon Nut M12



PRODUCT CENTER



MR-GT3-SA GT3 Support A

- ◆ U Beam
- ◆ GT3 Tube A
- ◆ GT3 Tube B
- ◆ Hexagon Bolt M12*95
- ◆ Flat Washer M12
- ◆ Spring Washer M12.4
- ◆ Hexagon Nut M12



MR-GT3-SB GT3 Support B

- | | |
|---------------------|---------------------|
| GT3 Tube C | Flat Washer M12 |
| GT3 H Head | Spring Washer M12.4 |
| Hexagon Bolt M12*75 | Hexagon Nut M12 |

Feature: Pre-assembled structure before shipment ensures a easier and quicker installation while consuming less time and labor cost.

